

Service Data

Vickers®

Directional Valves

Wet Armature Solenoid Operated Directional Valve



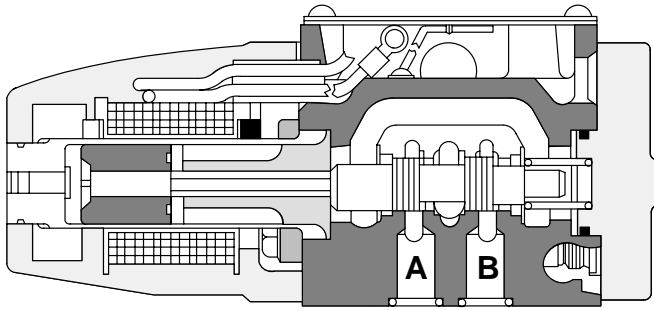
DG4S*-01*A-W(3)-*-50



Revised 10/01/88

I-3557-S

DG4S*-01*A-W-*-50



Note
Right hand assembly shown. For left hand assembly all parts, except body, are reversed. Example of left hand model: DG4S*-012A-W-*-50-LH.

Note
Part numbers prefixed with a symbol are available only as service kits.

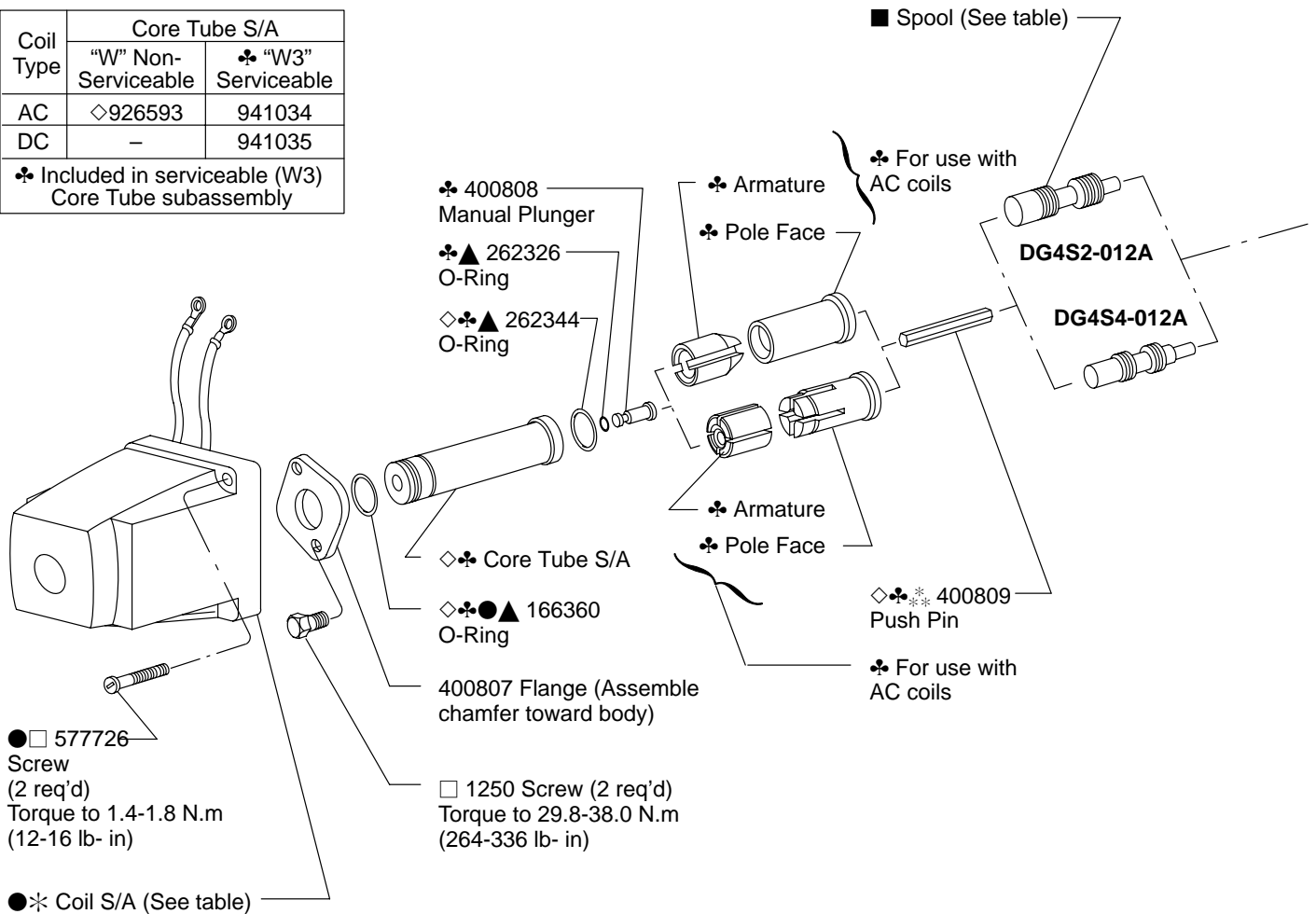
*: Suffix symbol pertains only to Vickers material control

Model	Spool	Diagram Plate	Spool Kit
DG4S2-012A-W-*-50	573396	290347	940701
DG4S2-012A-W-*-50LH		577488	941010
DG4S4-010A-W-*-50	572287	290348	940703
DG4S4-010A-W-*-50LH		577490	941011
DG4S4-012A-W-*-50	463426	290348	940704
DG4S4-012A-W-*-50LH		577490	941012
DG4S4-016A-W-*-50	572288	290348	940705
DG4S4-016A-W-*-50LH		577490	941013

Spool kit includes spool, diagram plate, seal kit, and parts prefixed with a closed square symbol (■).

Coil Type	Core Tube S/A	
	"W" Non-Serviceable	♣ "W3" Serviceable
AC	◇926593	941034
DC	-	941035

♣ Included in serviceable (W3) Core Tube subassembly



□ 174638 Screw (4 req'd)
Torque to 0.8-0.9 N.m (7-9 lb-in)

Nameplate
(not available for sale)

286122 Gasket & Wire S/A

□ 36212 Screw

□ 11012 Screw
(4 req'd)
Torque to 4.9-6.0 N.m
(43-53 lb-in)

▲ 262344
O-Ring

▲ 263493 O-Ring

■ 236451 Spring

407533 Plug
Torque to
12.1-12.4 N.m
(107 -110 lb-ft)

400846 Cover

407533 Plug
Torque to
12.1-12.4 N.m
(107 -110 lb-ft)

▲ 263493 "O" Ring

■ Diagram Plate (See table)

♣●▲ 400815 Gasket

●▲ 262334
O-Ring
(F3 Viton - 5 req'd)

□■ 416834 Rivet (4 req'd)

● Included in Coil Kit

● Coil S/A	Coil Kit	AC Volt/Hz	DC Volt	Coil Code	DIN Coil
400823	942466	110/50, 115/60, 120/60		B	463328
400824	942467	220/50, 230/60		D	463329
400825	942468	440/50, 460/60		M	463330
400826	942469		12	G	463331
400827	942470		24	H	463332
435755	941017	127/50		EG	
582214	941109		250	X	617244
730273	926461		48	J	
		100/50, 100/60		T	977929
		380/50, 380/60		DZ	617370

▲ Included in F3 Seal Kit 920109

□ Included in Fastener Kit 942465

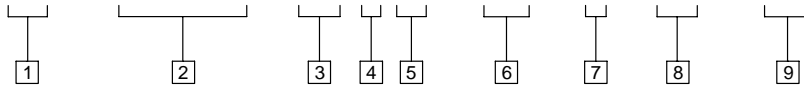


* CAUTION

Correct armature and pole face must be used for AC and DC operation.

Model Code

(F3) - DG4S - 01 * A - W3 - * - 50 - (LH)**



1 Seal Material

F3 - Seals for mineral oil and fire resistant fluids

2 Model Series

DG4S** - Directional valve, manifold or subplate mounting, solenoid operated, sliding spool

3 Flow Direction

2 - 2 way
4 - 4 way

4 Solenoid Indicator Lights

L - Light
Omitted - None

5 Series

6 Spool Type

7 Offset

A

8 Wet Artmature Type

W - Non-serviceable Core Tube S/A
W3 - Serviceable Core Tube S/A

9 Coil Identification Letter

9 Design

9 Left Hand Assembly



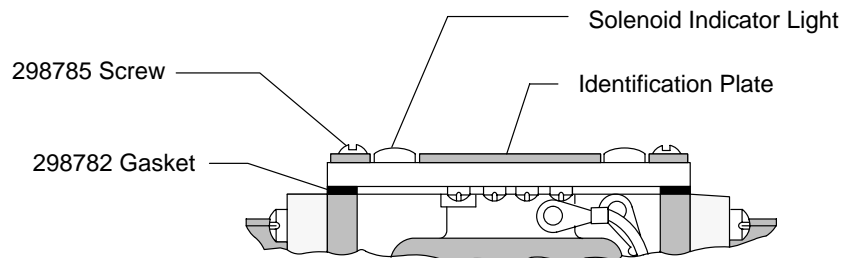
*** WARNING**
Use this drawing for parts information only.

For Models with Solenoid Indicator Lights

Solenoid Indicator Light Kit (Includes all parts identified)	
Voltage Range	Kit
100 thru 127	941615
192 thru 233	941617

Note

Refer to parts drawing I-3487-S for models with plug-in feature.



For satisfactory service life of these components, use full flow filtration to provide fluid which meets ISO cleanliness code 20/18/15 or cleaner. Selections from Eaton OFF, OFR, and OFRS series are recommended.