

Pressure Relief

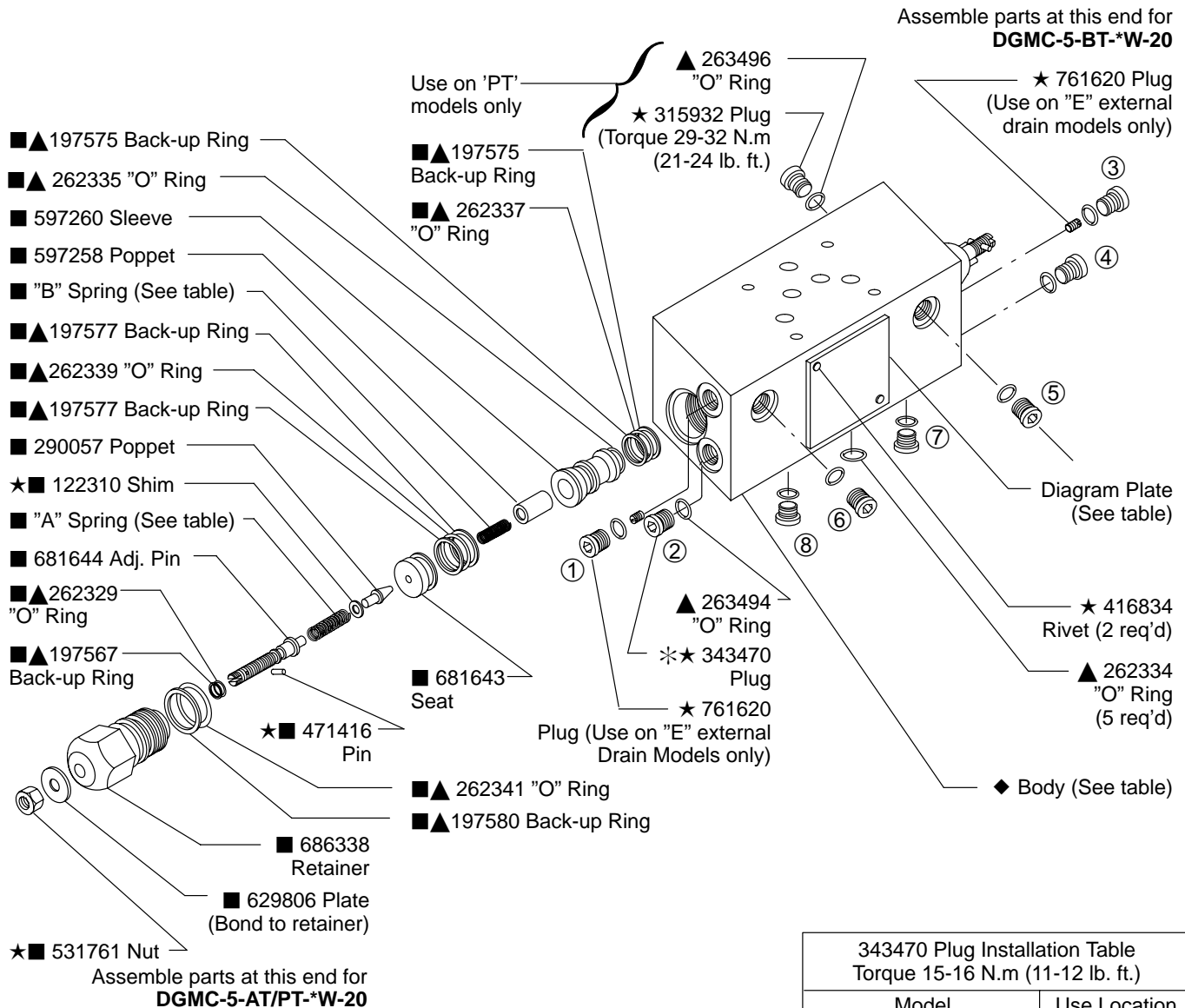


Single Type Pressure Relief Module

DGMC-5-*T-*W-(E)-20

Model (A or B End)	"A" Spring	"B" Spring	Pressure Range		Relief Valve Kit
			bar	(PSI)	
DGMC-5-*T-AW	681645		5.2 - 35	(75-500)	926534
DGMC-5-*T-BW	681646	631770	8.5 - 70	(125-1000)	926535
DGMC-5-*T-CW	681647		8.5 - 140	(125-2000)	926536
DGMC-5-*T-FW	681648	688768	8.5 - 250	(125-3600)	926537

Model	Body	Diagram Plate
DGMC-5-AT-AW-*W-(E)-20	595968	631914
DGMC-5-BT-BW-*W-(E)-20	595969	631916
DGMC-5-PT-CW-*W-(E)-20	595970	631917



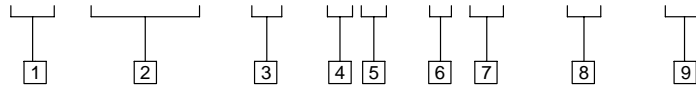
- Included in Relief Valve Kit
- ★ Available only in Kits of 25 each
- ▲ Included in F3 Seal Kit 920338
- ◆ Not available for sale

Refer to 343740 Plug installation table to determine correct plugs for each model

Model	Use Location
DGMC-5-AT-*W-20	1,2,3,6,8
DGMC-5-AT-*W-E-20	2,3,6,8
DGMC-5-BT-*W-20	2,3,4,5,7
DGMC-5-BT-*W-E-20	2,4,5,7
DGMC-5-PT-*W-20	1,2,3,6,8
DGMC-5-PT-*W-E-20	2,3,6,8

Model Code

(F3) DGMC - 5 - * T - * W - (E) - 20



1 Seal Material

F3 - Seals for mineral oil and fire resistant fluids

2 Model Series

DGMC - Directional valve, manifold or subplate mounted, module pressure relief, single type

3 Interface

NFPA-D02
(ISO 4401-05)

4 Port Acted Upon

A - Cylinder 'A'
B - Cylinder 'B'
P - Pressure 'P'

6 Drain Port

T - Tank

7 Pressure Range

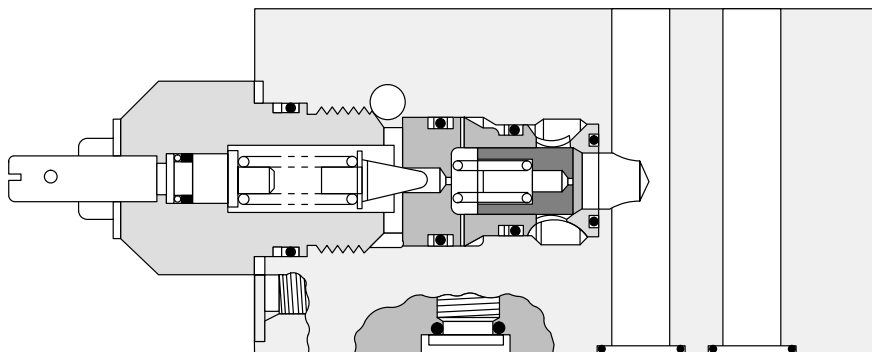
	Bar	PSI
A	5.2-35	(75-500)
B	8.5-70	(125-1000)
C	8.5-140	(125-2000)
F	8.5-250	(125-3600)

11 Screw & Locknut Adjustment

12 Drain

E - External drain
Omit for standard internal drain

13 Design



DGMC - 5 - AT/PT - *W - (E) - 20 Sectional View

For satisfactory service life of these components, use full flow filtration to provide fluid which meets ISO cleanliness code 20/18/15 or cleaner. Selections from Eaton OFP, OFR and OFRS filter series are recommended.

Printed in U.S.A.