

Service Data

Vickers®

# Piston Pumps

---



## Variable Inline Piston Pump

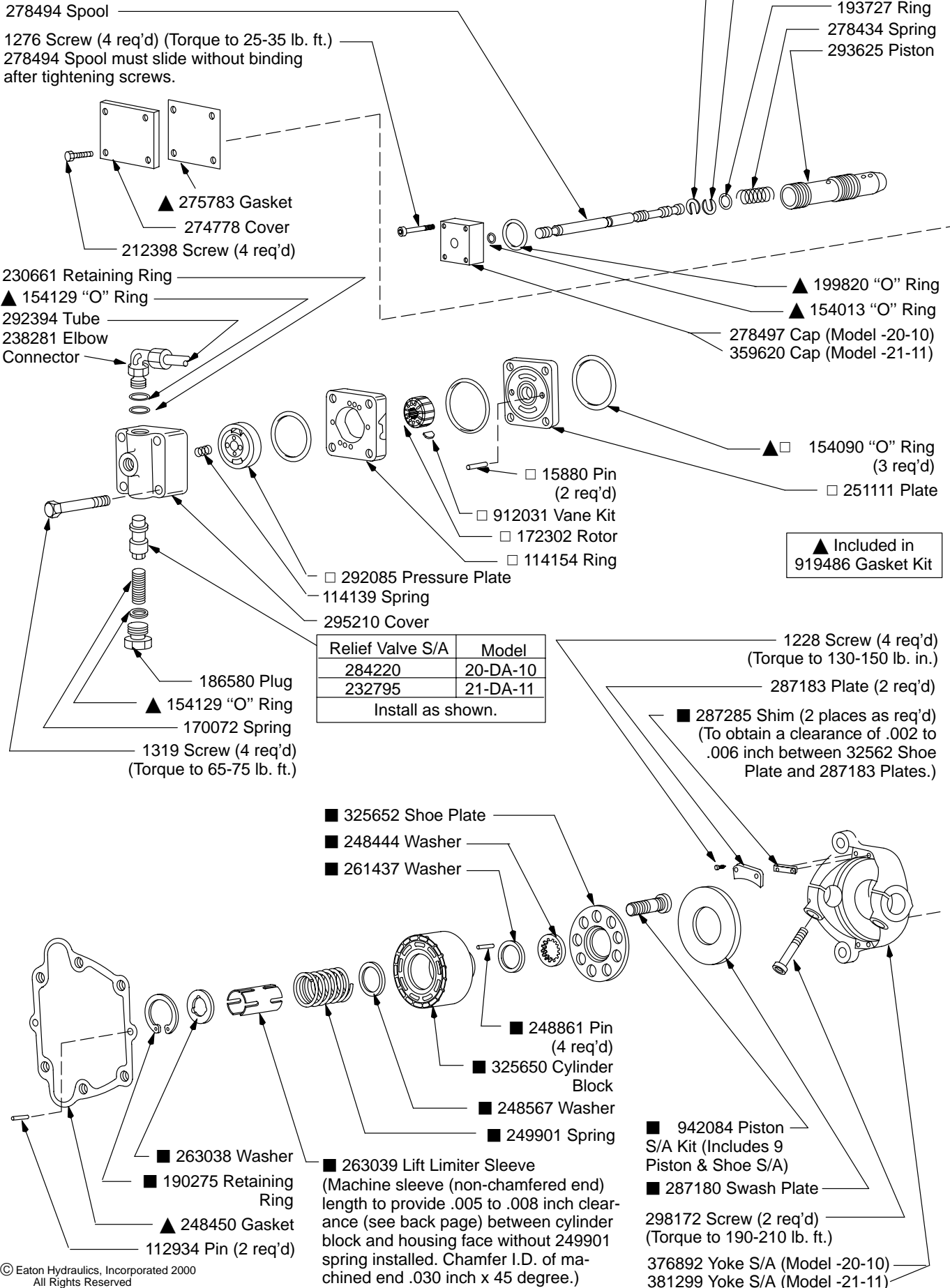
PVB90-(F)\*DF-2\*-D(A)-1\*

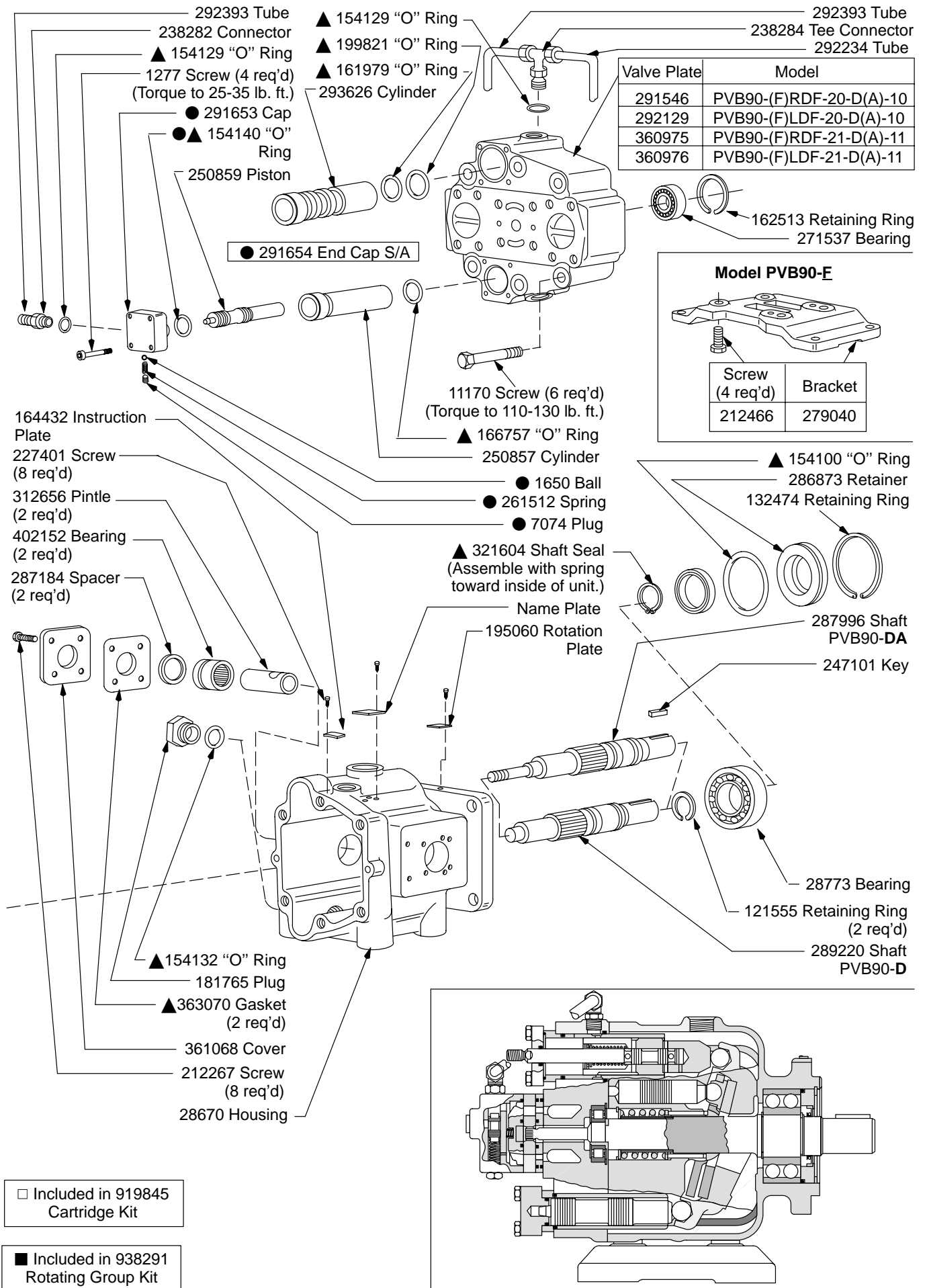


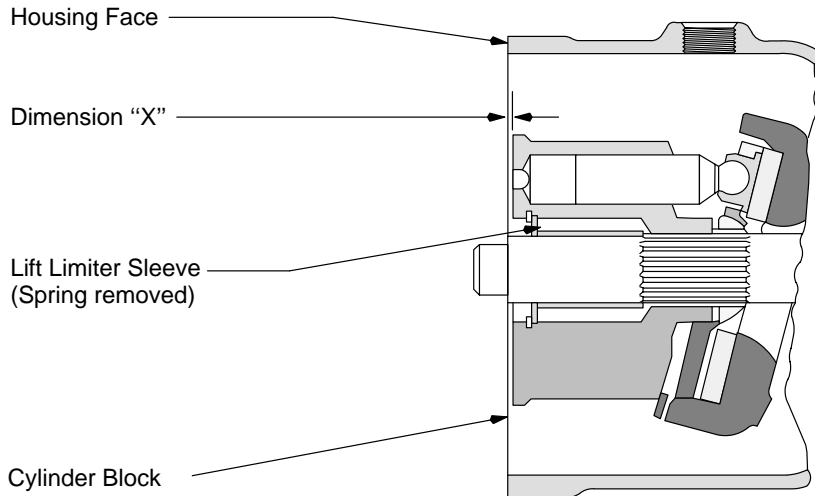
Revised 10-01-85

I-3289-S

### Vane Pump and Tubing Parts for -DA Model only







## MODEL CODE BREAKDOWN

**PVB 90 - (F) \* D F - 2\* - D (A) - 1\***

**1 Model**

Variable displacement pump, inline type

**2 Flow rating @ 1800 rpm**

90 - 90 USgpm

**3 Mounting**

F - Foot bracket (Omit for flange mount)

**4 Rotation**

Viewing from shaft end  
 L - Left hand  
 R - Right hand

**5 Swash Plate Movement**

D - Both sides of center

**6 Port Options**

F - Flanged port - SAE 4 bolt

**7 Pump Design**

**8 Control Type**

D - Control stem servo

**9 Additional Options**

A - Integral control pump (Omit when not included.)

**10 Control Design Number**

For satisfactory service life of these components, use full flow filtration to provide fluid which meets ISO cleanliness code 16/13 or cleaner. Selections from pressure, return, and in-line filter series are recommended.