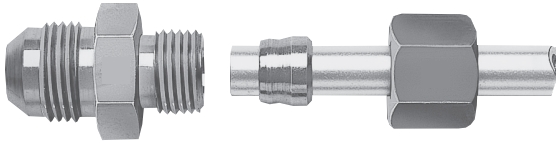


# DIN Fittings



Metric Tube O.D.	6	8	10	12	14	15	16
Light	M12x1.5	M14x1.5	M16x1.5	M18x1.5	-	M22x1.5	-
Heavy	M14x1.5	M16x1.5	M18x1.5	M20x1.5	M22x1.5	-	M24x1.5

Metric Tube O.D.	18	20	22	25	28	30
Light	M26x1.5	-	M30x2.0	-	M36x2.0	-
Heavy	-	M30x2.0	-	M36x2.0	-	M42x2.0

**Typical Application:** Used in applications to adapt connections made to DIN (Deutsche Industrie Norme) specifications to male SAE 37° flare.

**Sealing Method:** 3-piece flareless bite type or 60° cone, or 37° flare.

**Vibration Rating:** Fair resistance.

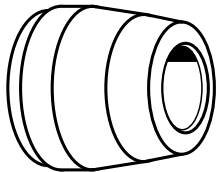
**Material:** Carbon steel – SAE 12L14

**Plating:** Bodies and sleeves – Zinc and Yellow Dichromate finish.  
Nuts – Phosphate coating.

**Advantages:** Provides an adapter to convert a metric hose assembly to 37° SAE allowing the use of standard hose and end fittings. Can also be used in the repair of metric tubing.

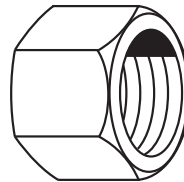
**Assembly:** See page 390 for metric preset tool.

## Metric Flareless Sleeve



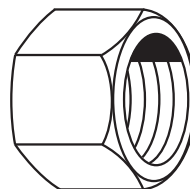
TUBE O.D. (MM)	CATALOG NUMBER
6	7165x6MM
8	7165x8MM
10	7165x10MM
12	7165x12MM
14	7165x14MM
15	7165x15MM
16	7165x16MM
18	7165x18MM
20	7165x20MM
22	7165x22MM
25	7165x25MM
28	7165x28MM
30	7165x30MM
38	7165x38MM

## Metric Flareless Nut Light Series (DIN 3901/3902L)



TUBE O.D. (MM)	METRIC THREAD SIZE	CATALOG NUMBER
6	M12x1.5	ML7105x6
8	M14x1.5	ML7105x8
10	M16x1.5	ML7105x10
12	M18x1.5	ML7105x12
15	M22x1.5	ML7105x15
18	M26x1.5	ML7105x18
22	M30x2.0	ML7105x22
28	M36x2.0	ML7105x28

## Metric Flareless Nut Heavy Series (DIN 3901/3902S)

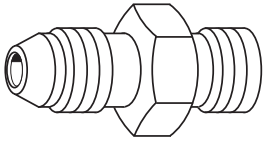


TUBE O.D. (MM)	METRIC THREAD SIZE	CATALOG NUMBER
6	M14x1.5	MH7105x6
8	M16x1.5	MH7105x8
10	M18x1.5	MH7105x10
12	M20x1.5	MH7105x12
14	M22x1.5	MH7105x14
16	M24x1.5	MH7105x16
20	M30x2.0	MH7105x20
25	M36x2.0	MH7105x25
30	M42x2.0	MH7105x30
38	M52x2.0	MH7105x38

**NOTE:** Multiply millimeters (mm) by 0.03937 to obtain inches.

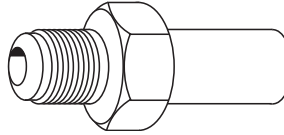
# DIN Fittings

**Male JIC 37° To 24° Metric  
Tube Seat  
(DIN 3901/3902L)**



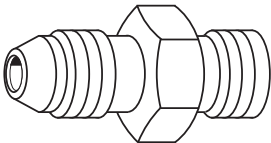
TUBE O.D.	METRIC THREAD	CATALOG NUMBER
1/4	M12x1.5	MC5206x4x6
3/8	M14x1.5	MC5206x6x8
1/2	M16x1.5	MC5206x8x10
1/2	M18x1.5	MC5206x8x12
5/8	M22x1.5	MC5206x10x15
3/4	M26x1.5	MC5206x12x18

**Male JIC 37° to Male  
Metric Standpipe**



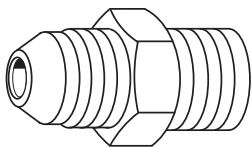
TUBE O.D.	TUBE O.D. (MM)	CATALOG NUMBER
1/4	6MM	MC5019x4x6
1/4	8MM	MC5019x4x8
3/8	10MM	MC5019x6x10
1/2	12MM	MC5019x8x12
1/2	14MM	MC5019x8x14
5/8	15MM	MC5019x10x15
5/8	16MM	MC5019x10x16
3/4	16MM	MC5019x12x16
3/4	18MM	MC5019x12x18
3/4	20MM	MC5019x12x20
1	22MM	MC5019x16x22
1	25MM	MC5019x16x25

**Male JIC 37° To 24° Metric  
Tube Seat  
(DIN 3901/3902S)**



TUBE O.D.	METRIC THREAD	CATALOG NUMBER
3/8	M14x1.5	MC5208x6x6
1/2	M18x1.5	MC5208x8x10
5/8	M22x1.5	MC5208x10x14
3/4	M24x1.5	MC5208x12x16

**Male JIC 37° To 60°  
Metric Tube Seat  
(DIN 7631)**



TUBE O.D.	METRIC THREAD	CATALOG NUMBER
1/4	M12x1.5	MC5207x4x6
3/8	M14x1.5	MC5207x6x8
3/8	M16x1.5	MC5207x6x10
1/2	M18x1.5	MC5207x8x12
5/8	M22x1.5	MC5207x10x15
3/4	M26x1.5	MC5207x12x18

**NOTE:** Multiply millimeters (mm) by 0.03937 to obtain inches.