

# Equipment

## Coll-O-Crimp Portable T-480



Refer to safety information regarding Coll-O-Crimp hose, hose fittings and assembly equipment compatibility on page 3.

### T-480-HP • Portable Coll-O-Crimp Press & Hand Pump Package



Refer to pages 356-367 for Coll-O-Crimp tooling, tooling packages and pumps.

Refer to safety information regarding Coll-O-Crimp crimping procedures on page 338.

Make factory-type hose assemblies anywhere-anytime! Versatile and portable, this package offers the ease of use you are looking for in a Coll-O-Crimp hose assembly system. The T-480 Coll-O-Crimp Press packages are offered in four options. Listed below are press/power unit packages.

For cabinets see page 370-373 (not included).

**Capacity:** 3/16" I.D. 1 fiber braid through 1-1/4" I.D. 6 spiral hose

**Mounting:** Free Standing Base

**Size:** 22-1/2" high, 14" long, 10-1/2" wide

**Total Weight:** 112 lbs.

### T-480-2 Pump Specifications:

**Dimensions:** 7-3/16" high, 21-1/64" long, 4-3/4" wide

**Pressure:** 0-10,000 psi

**Outlet Port Size:** 3/8" NPT

**Hydraulic Oil:** Enerpac

**Reservoir Capacity:** 55 cu. in.

Includes **T-480-68** blue pusher extension ring to be used with **T-480** Portable Coll-O-Crimp and the **T-420** collets only.

For replacement pump see page 363-366.

### T-480-AH • Portable Coll-O-Crimp Press & Air/Hydraulic Pump Package



Refer to pages 356-366 for Coll-O-Crimp tooling, tooling packages and pumps.

Refer to safety information regarding Coll-O-Crimp crimping procedures on page 339.

**Capacity:** 3/16" I.D. 1 fiber braid through 1-1/4" I.D. 6 spiral hose

**Mounting:** Free Standing Base

**Size:** 22-1/2" high, 14" long, 10-1/2" wide

**Total Weight:** 124 lbs.

### T-482-2 Pump Specifications:

**Dimensions:** 5" high, 14-5/8" long, 5-5/8" wide

**Pressure:** 0-10,000 psi

**Outlet Port Size:** 3/8" NPT

**Inlet Port:** 1/4" NPT

**Pump Inlet Air Pressure:** 60-100 psi

**Hydraulic Oil:** Enerpac

**Reservoir Capacity:** 36 cu. in.

Includes **T-480-68** blue pusher extension ring to be used with **T-480** Portable Coll-O-Crimp and the **T-420** collets only.

**Note:** It is recommended that a filter, regulator, lubricator, and air pressure gauge be installed upstream from the pump. Filter, regulator and lubricator units are not included.

For replacement pump see page 363-366.

# Equipment

## Coll-O-Crimp Portable T-480



Refer to safety information regarding Coll-O-Crimp hose, hose fittings and assembly equipment compatibility on page 3.

### T-480-TA • Portable Coll-O-Crimp Press & Turbo Air/Hydraulic Pump Package



Reference pages 356-367 for Coll-O-Crimp tooling, tooling packages and pumps.

Refer to safety information regarding Coll-O-Crimp crimping procedures on page 340.

**Capacity:** 3/16" I.D. 1 fiber braid through 1-1/4" I.D. 6 spiral hose

**Mounting:** Free Standing Base

**Size:** 22-1/2" high, 14" long, 10-1/2" wide

**Total Weight:** 116 lbs.

### T-480-3 Pump Specifications:

**Dimensions:** 8-1/4" high, 12-3/8" long, 8" wide

**Pressure:** 0-10,000 psi

**Outlet Port Size:** 3/8" NPT

**Inlet Port:** 1/4" NPT

**Pump Inlet Air Pressure:** 40-150 psi

**Hydraulic Oil:** Enerpac

**Reservoir Capacity:** 150 cu. in.

Includes **T-480-68** blue pusher extension ring to be used with **T-480** Portable Coll-O-Crimp and the **T-420** collets only.

**Note:** It is recommended that a filter, regulator, lubricator, and air pressure gauge be installed upstream from the pump. Filter, regulator and lubricator units are not included.

For replacement pump see page 363-366.

### T-480-EP • Portable Coll-O-Crimp Press & 110v Electric Pump Package



Reference pages 356-367 for Coll-O-Crimp tooling, tooling packages and pumps.

Refer to safety information regarding Coll-O-Crimp crimping procedures on page 340.

**Capacity:** 3/16" I.D. 1 fiber braid through 1-1/4" I.D. 6 spiral hose

**Mounting:** Free Standing Base

**Size:** 22-1/2" high, 14" long, 10-1/2" wide

**Total Weight:** 134 lbs.

### T-481-110 Pump Specifications:

**Electrical Power Source:** 15amp, 110v grounded 1Ph 50/60HZ

**Dimensions:** 14-1/4" high, 9-5/8" long, 9-5/8" wide

**Pressure:** 0-10,000 psi

**Outlet Port Size:** 3/8" NPT

**Hydraulic Oil:** Enerpac

**Reservoir Capacity:** 115.5 cu. in.

**Flow:** .5 to 1.0 gpm

**Motor Rating:** 1/2 hp universal, 9 amps at 10,000 psi

Includes **T-480-68** blue pusher extension ring to be used with **T-480** Portable Coll-O-Crimp and the **T-420** collets only.

For replacement pump see page 363-366.

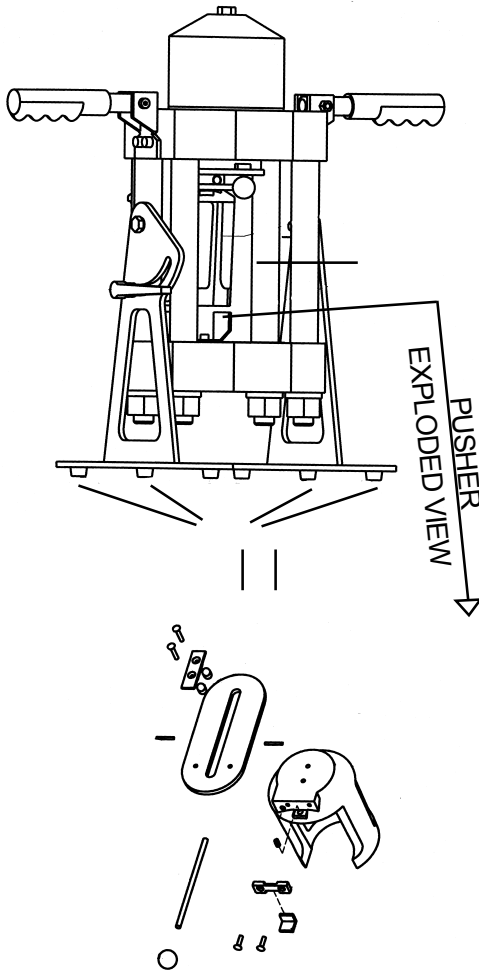
# Equipment

## Coll-O-Crimp Portable T-480



Refer to safety information regarding Coll-O-Crimp hose, hose fittings and assembly equipment compatibility on page 3.

### T-480 • Portable Coll-O-Crimp Repair & Replacement Items



#### CATALOG NUMBER

#### DESCRIPTION

CATALOG NUMBER	DESCRIPTION
T-480-P	Pusher
T-480-PSK	Pusher Stop Repair Kit (Includes pusher clip, 2 machine screws, pusher stop & spring)
T-480-SP	Slider Plate
140-05485-01	Roll Pin
T-480-SFK	Slide Flange Kit (Includes slide flange, 2 bushings & 2 machine screws)
T-480-SPR	Slide Pull Rod
T-480-SPK	Slide Pull Knob
140-06601	Vinyl Grip
T-480-TBK	Tilt Bracket Knob
140-06894	Foot Pad
T-480-69	Tool Locator Bracket
T-480-16	10,000 PSI replacement hose assembly for 480-HP
T-480-17	10,000 PSI replacement hose assembly for T-480-TA and T-480-EP
T-480-18	10,000 PSI replacement hose assembly for 480-AH
140-06906	Hydraulic Quick Coupler used with the T-480-TA and T-480-EP System
T-480-3	Turbo Air/Hydraulic replacement pump for T-480-TA System
T-481-110	Electric replacement pump for T-480-EP System
T-480-2	Hand replacement pump for T-480-HP System
T-482-2	Air/Hydraulic replacement pump for T-480-AH System
T-480-E	Shroud Decal
T-480-M	Set-up & Operating Guide for T-480 System