

# H620 Series High Performance Pressure Filter

Flows to 568 L/min (150 USgpm) 414 bar (6000 psi)



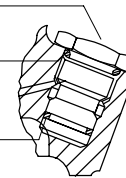
**CAUTION**

Before servicing the element, the bleed plug in filter housing must be loosened to relieve hydraulic pressure. This will minimize fluid overflow.

P-227533-01 Indicator port plug

▲● AS568-908 "O"-Ring

▲● AS568-014 "O"-Ring

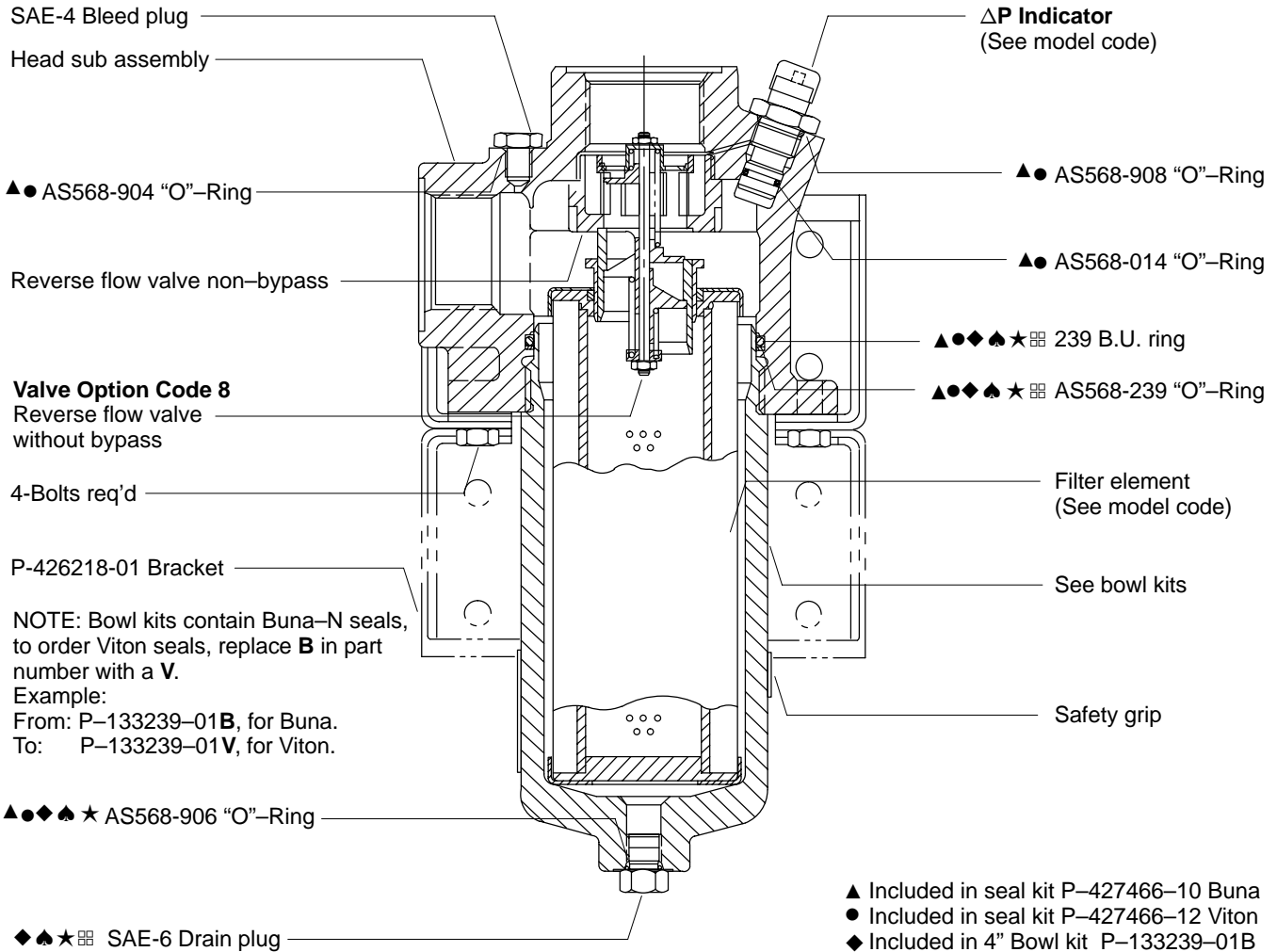


**Note/Warning Valve options 1 & 8 :**

To prevent high pressure losses and defective operation, change filter element at specified intervals (max. six months) or on visual or electrical indication whichever is applicable.

**Note/Warning Valve options 4 & 9 :**

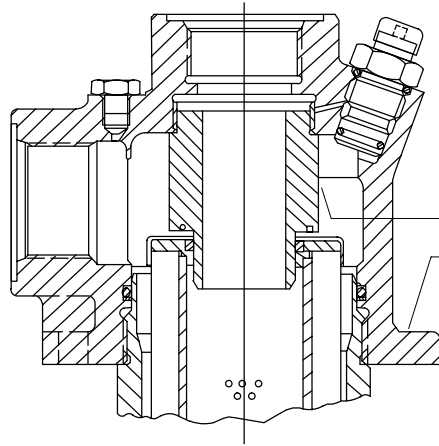
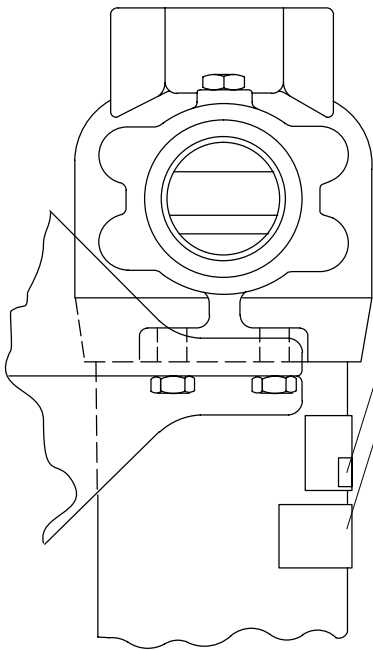
To prevent filter bypass, change the filter element on visual or electrical indication or at specified intervals (max. six months) whichever is applicable.



NOTE: Bowl kits contain Buna-N seals, to order Viton seals, replace **B** in part number with a **V**.  
 Example:  
 From: P-133239-01**B**, for Buna.  
 To: P-133239-01**V**, for Viton.

◆◆★ SAE-6 Drain plug

- ▲ Included in seal kit P-427466-10 Buna
- Included in seal kit P-427466-12 Viton
- ◆ Included in 4" Bowl kit P-133239-01B
- ★ Included in 8" Bowl kit P-133239-02B
- ★ Included in 13" Bowl kit P-133239-04B
- ☐ Included in 16" Bowl kit P-133239-05B

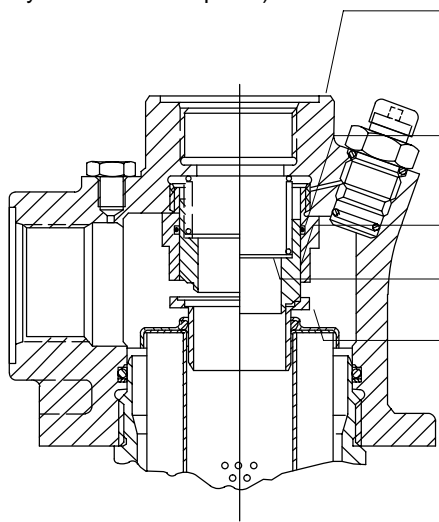


Nipple (Non-bypass)

Head sub assembly

**Valve Option Code 1**

No bypass valve  
 No reverse flow valve  
 Normal flow only



Head sub assembly

▲● AS568-033 "O"-Ring

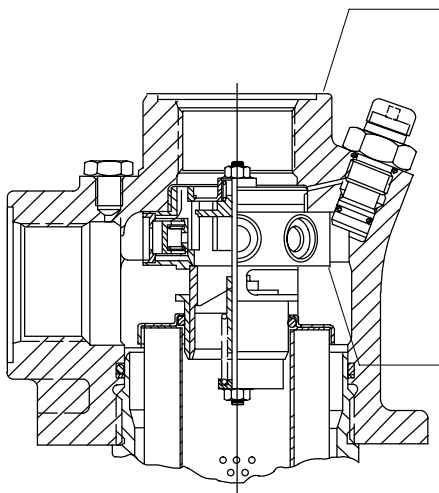
Poppet

Washer

Nipple (Non-bypass)

**Valve Option Code 4**

Normal flow bypass  
 No reverse flow valve



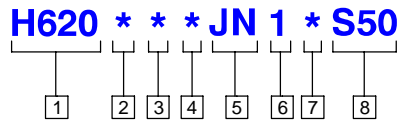
Head sub assembly

Reverse flow valve with bypass

**Valve Option Code 9**

Reverse flow valve with  
 Normal flow bypass

## Head Sub Assembly Model Code



### 1 Filter series

**H620**

### 2 Element collapse rating

1 – 150 PSID (10 bar)  
4 – 3000 PSID (210 bar) (H-pak only)

### 3 Port option

**B** – 1.312-12UN SAE-16 str. thd. (1" tube)  
**C** – 1.625-12UN SAE-20 str. thd. (1 1/4" tube)  
**D** – 1.875-12UN SAE-24 str. thd. (1 1/2" tube)  
**G** – 1 1/4" SAE 4-bolt split flange Code 61  
**E** – 1 1/2" SAE 4-bolt split flange Code 61  
**Q** – 1 1/4" SAE 4-bolt split flange Code 62

### 4 Valve option

1 – Non-bypass  
4 – Bypass set at 50 ± 5 PSID (3,4 bar) cracking pressure  
6 – Bypass set at 90 ± 10 PSID (6,2 bar) cracking pressure  
8 – Reverse flow valve non-bypass  
9 – Reverse flow valve with bypass set at 50 ± 5 PSID (3,4 bar)

### 5 ΔP indicator & receptacle options

**First designator** (Indicator type)

**J** – No ΔP indicator

**Second designator** (Electrical receptacle)  
**N** – No receptacle – Use with visual ΔP indicator.

### 6 Brackets (P-426218-0)

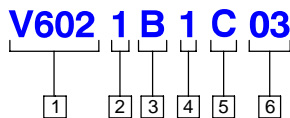
1 – No bracket

### 7 Seal material

**B** – Buna-N  
**V** – Viton-A

### 8 S50 Head sub assembly

## Element Model Code



### 1 Filter element

**V602** – For use with H620 series filters

### 2 Element collapse rating

1 – 150 PSID (10 bar)  
4 – 3000 PSID (210 bar) (H-pak only)  
NOTE: 1 use only with bypass valve

### 3 Seal material

**B** – Buna-N  
**V** – Viton-A

### 4 Bowl length mm (in)      Element length mm (in)

1 – 180 (7.1)	101,6 (4)
2 – 272 (10.7)*	203 (8)
4 – 392 (15.4)	330 (13)
5 – 490 (19.3)	406 (16)

\*HF3

### 5 Element construction

**C** – C-pak (grade 01, 03, 5, 10, 20)  
**H** – H-pak (grade 3, 10)  
**E** – E-pak (grade 03, 05, 10)

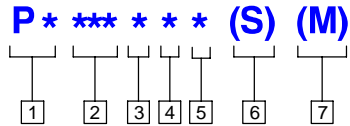
### 6 Fluid cleanliness ratings

Code	Fluid cleanliness level
<b>03</b>	16/14/12 or better
<b>05</b>	18/16/14 or better
<b>10</b>	20/18/15 or better
<b>20</b>	22/19/16 or better

The table above assumes limited ingress and a single pass of pump flow through the element. For more detailed information, please consult Vickers Guide to Systemic Contamination Control **561** or contact your local Vickers Distributor.

# Differential Pressure Indicator Model Code

---



## 1 Style option

**PV** – Visual  
**PE** – Electrical  
**PD** – Electrical/Visual

---

## 2 Actuation pressure option

**015** – 15 ± 4 PSID (1 bar)  
**035** – 35 ± 5 PSID (2,4 bar)  
**070** – 70 ± 7 PSID (4,8 bar)  
(not an option with 330/340 filters)  
**100** – 100 ± 12 PSID (6,9 bar)

---

## 3 Thermal lockout option

**N** – No thermal lockout  
(not an option with IFI indicator)  
**T** – Thermal lockout  
(standard TLO=80 ± 20° F)

---

## 4 Seal option

**1** – Buna-N  
**2** – Viton

---

## 5 Receptacle option

**B** – 5-pin Brad Harrison (41512)  
(not an option with visual indicator)  
**H** – Hirschman (DIN 43650)  
(not an option with visual indicator)  
**N** – No receptacle (use with visual indicator)  
(not an option with IFI indicator)

---

## 6 Surge control option

**None** – No surge control  
**S** – Surge control  
(not an option with 330/340 filters)

---

## 7 Filter series option

**None** – Standard  
**M** – 330/340 Filters only

---

## Eaton Hydraulics

15151 Highway 5  
Eden Prairie, MN 55344  
Telephone: 612 937-7254  
Fax: 612 937-7130  
www.eatonhydraulics.com

46 New Lane, Havant  
Hampshire PO9 2NB  
England  
Telephone: (44) 170-548-6451  
Fax: (44) 170-548-7110

---

