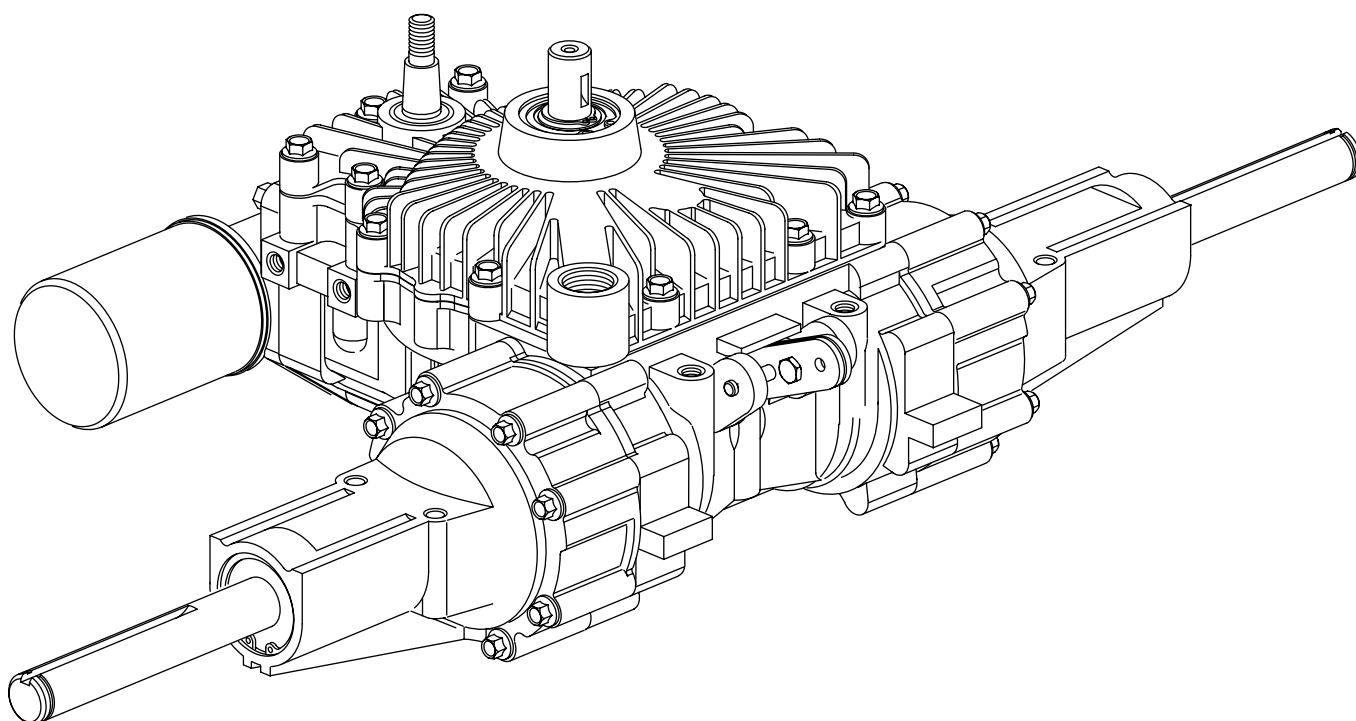


Eaton®
Hydrostatic Transaxle

No. 6-426
May, 1999

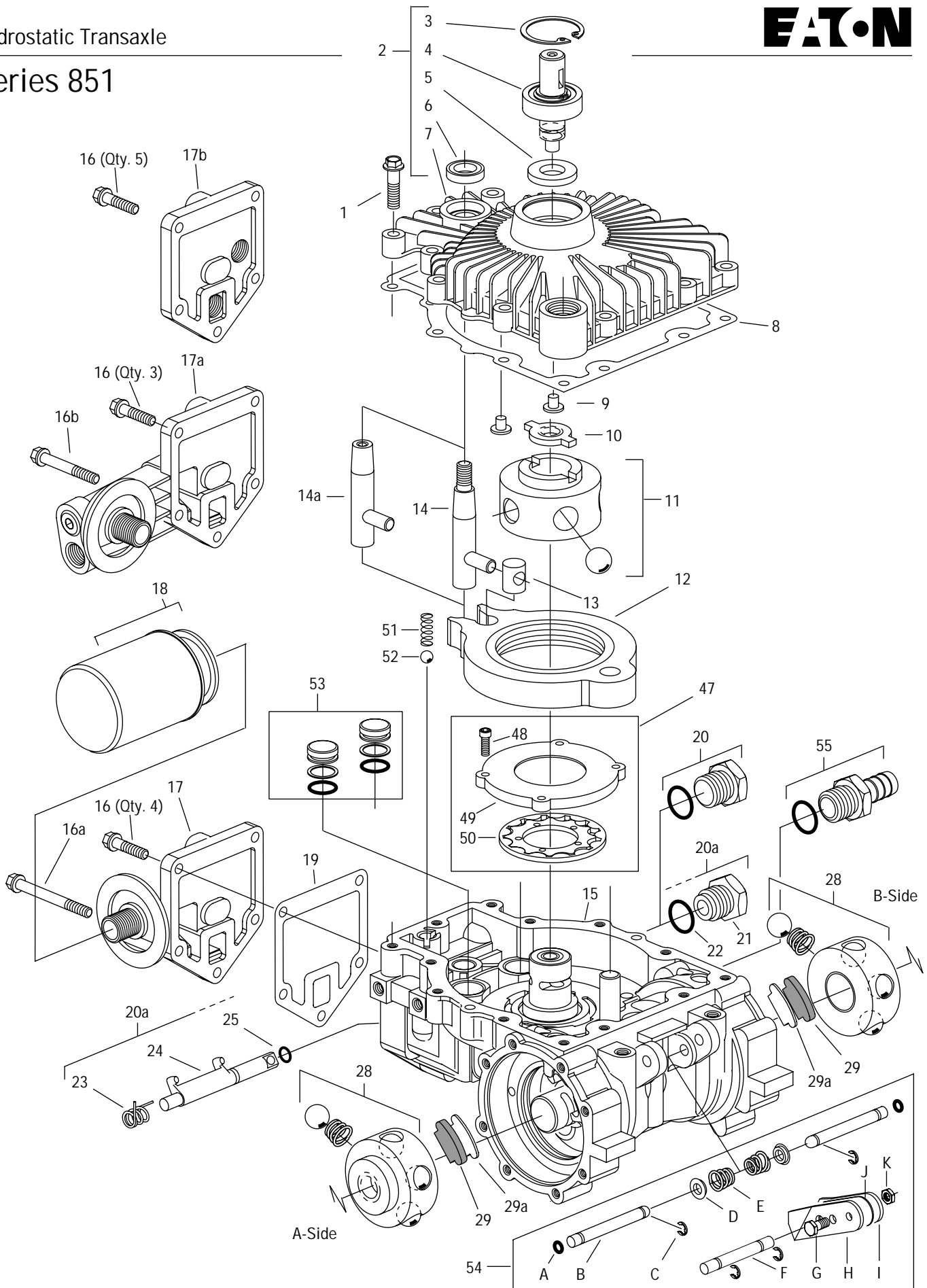


Parts Information



Series 851

Series 851



Ref. No.	Part Number	Description	Qty.	Ref. No.	Part Number	Description	Qty.
1	104436-100	Screw, 1/4-20 Self Tap	13		104984	15T Sun Gear, 2nd (Steel)	2
2	106071	Cover (S/A)	1	37	106169	21T Plnt Gear (S/A) Second	6
3	101680-156	Ring, Retaining, Internal	1		106204	21T Plnt Gear (S/A) 2nd Steel	6
4	106073	Shaft, Input (S/A)	1	38	106137	Secondary Carrier (S/A)	2
5	93955	Seal, Input Shaft	1	39	106178-000	Axle Housing (S/A) A-Side	1
6	93895	Seal, Control Shaft	1	39a	106178-000	Axle Housing (S/A) B-Side	1
7	106070	Cover	1		106190**	Magnet (S/A)	2
8	105327	Gasket, Cover	1	40	106162	Housing, Axle	2
9	101597	Button	2	41	103983-098	Ring, Retaining, External	4
10	104107	Drive	1	42	103966	Thrust Washer	4
11	104414	Pump Rotor/Ball/Pin (S/A)	1	43	101680-206	Ring, Retaining, Internal	2
12	104131	Cam Ring (S/A)	1	44	104928	Bearing, Ball	2
13	103621	Insert	1	45	103960	Seal, Radial Lip	2
14	103611	Control Shaft, External Thrd.	1	46	106177-000	Shaft, Axle — A-Side	1
14a	104935	Control Shaft, Internal Thrd.	1		106177-000	Shaft, Axle — B-Side	1
15	***	Housing (S/A)	1	47	***	Pump, Charge	1
16	103757-088	Screw, 1/4-20 Hex Flange	A/R	48	101676-088	Screw, Cap, Socket	4
16a	103757-375	Screw, 1/4-20 Hex Flange	1	49	104467	Plate, Pump (Class II)	1
16b	103757-250	Screw, 1/4-20 Hex Flange	2	50	104466	Gerotor (Class II)	1
17	104386	Filter Base "L"	1	49 and 50	104701	Plate, Pump and Gerotor (High Pressure)	1
17a	104382	Filter Base "U"	1	51	104421	Spring	1
	104384	Filter Base "U" w/Ports (2)	1	52	95881-038	Ball	1
17b	104531	Plate, Port	1	53	***	Piston, Dampening	
18	103144	Filter	1		104962	Piston (S/A)	2
19	104392	Gasket	1		105814*	Piston (S/A)	2
20	106008	Plug/Seal (S/A) No Dump V	1	54		Brake Lever Parts	
	8785-010	Seal, O-ring	1	A	106450	Quad Seal	2
20a		Dump Valve Parts	1	B	106079	Rod, Push	2
21	104664	Nut, Dump Valve Fitting	1	C	106437-000	E-Ring	4
22	8785-010	Seal, O-ring	1	D	106784	Spring Base (S/A)	2
23	104684	Spring, Dump Valve	1	E	106078	Spring, Conical	2
24	105660	Bracket, Dump Valve	1	F	106261	Shaft, Brake	1
25	8761-013	Seal, O-ring	1	G	16032-406P	Screw, Cap, Hex	1
26	103757-225	Screw 5/16 Hex Flange	16	H	106128-001	Lever, Brake RH	1
27	106129	Gasket, Axle Housing	2	I	106128-002	Lever, Brake LH	1
28	104551	15T Motor Rotor/Ball (S/A)	2	J	106144-XXX	Shim	A/R
29	110185	Pad, Friction	2	K	16188-4	Nut, Hex, Lock	1
29a	110186	Spacer	2	55	106285	.625 Str. Fitting/O-ring	1
30	106414	Plate, Reaction	2		8785-010	Seal, O-ring	1
31	106104	Plate, Backup	2	101	104167-000	Square Key (Straight Shaft)	2
32	104338	15T Sun Gear, First	2				
33	106027	Gear, Ring 57T	4				
34	106167	21T Planet Gear (S/A) First	6				
35	106174	15T Primary Carrier (S/A)	2				
36	104812	15T Sun Gear, Second	2				

*Piston, Dampening (S/A) - Wide Band Neutral — Not Shown (has orifice hole through center).

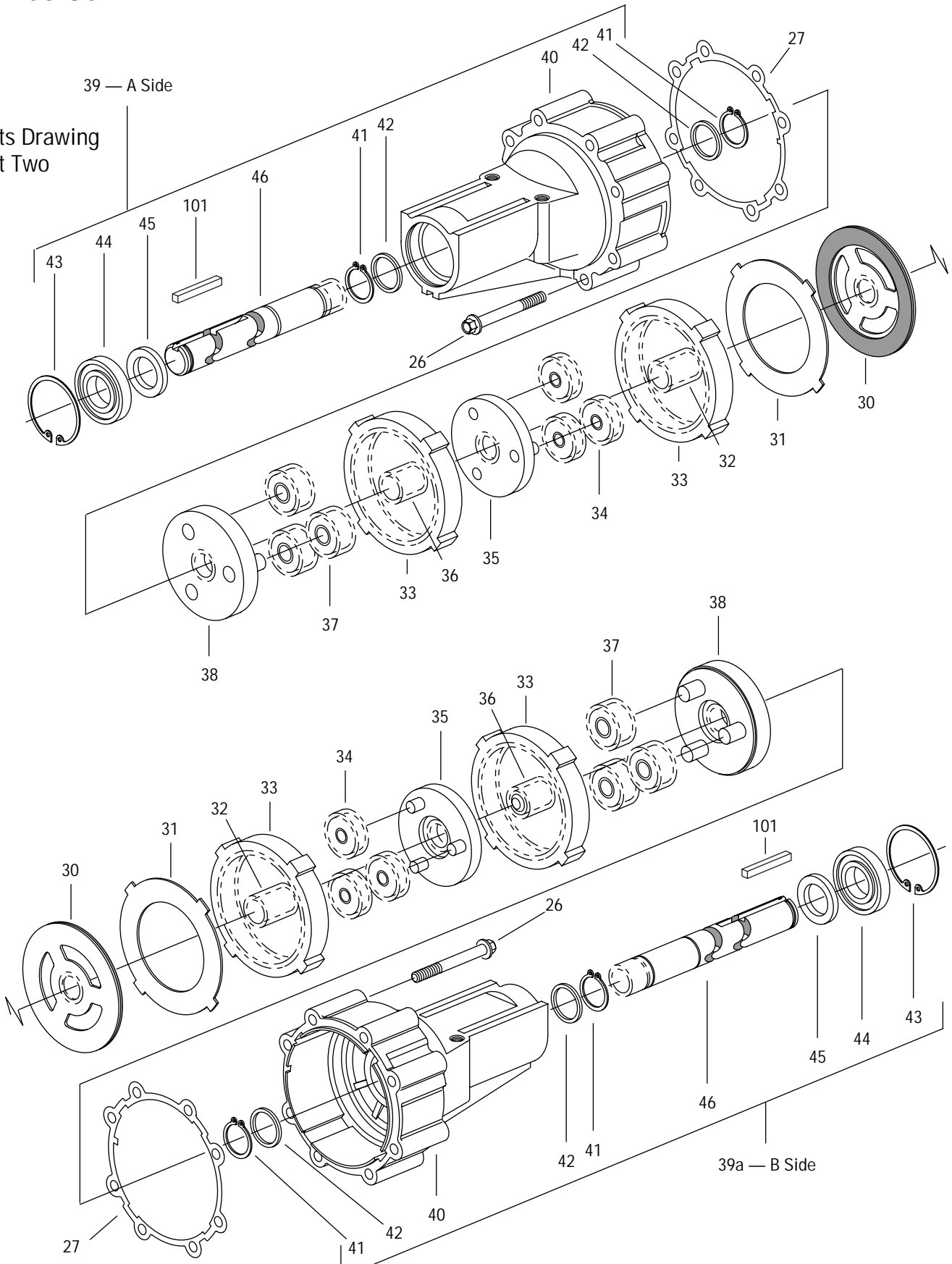
A/R - as Required (S/A) - Sub Assembly

**Magnet (S/A) - Not Shown (Removal Not Recommended)

*** See Chart on Page 6 — Housing (S/A)

Series 851

Parts Drawing
Part Two



Hydrostatic Transaxle



Ref. No.	Part Number	Description	Qty.	Ref. No.	Part Number	Description	Qty.
1	104436-100	Screw, 1/4-20 Self Tap	13		104984	15T Sun Gear, 2nd (Steel)	2
2	106071	Cover (S/A)	1	37	106169	21T Plnt Gear (S/A) Second	6
3	101680-156	Ring, Retaining, Internal	1		106204	21T Plnt Gear (S/A) 2nd Steel	6
4	106073	Shaft, Input (S/A)	1	38	106137	Secondary Carrier (S/A)	2
5	93955	Seal, Input Shaft	1	39	106178-000	Axle Housing (S/A) A-Side	1
6	93895	Seal, Control Shaft	1	39a	106178-000	Axle Housing (S/A) B-Side	1
7	106070	Cover	1		106190**	Magnet (S/A)	2
8	105327	Gasket, Cover	1	40	106162	Housing, Axle	2
9	101597	Button	2	41	103983-098	Ring, Retaining, External	4
10	104107	Drive	1	42	103966	Thrust Washer	4
11	104414	Pump Rotor/Ball/Pin (S/A)	1	43	101680-206	Ring, Retaining, Internal	2
12	104131	Cam Ring (S/A)	1	44	104928	Bearing, Ball	2
13	103621	Insert	1	45	103960	Seal, Radial Lip	2
14	103611	Control Shaft, External Thrd.	1	46	106177-000	Shaft, Axle — A-Side	1
14a	104935	Control Shaft, Internal Thrd.	1		106177-000	Shaft, Axle — B-Side	1
15	***	Housing (S/A)	1	47	***	Pump, Charge	1
16	103757-088	Screw, 1/4-20 Hex Flange	A/R	48	101676-088	Screw, Cap, Socket	4
16a	103757-375	Screw, 1/4-20 Hex Flange	1	49	104467	Plate, Pump (Class II)	1
16b	103757-250	Screw, 1/4-20 Hex Flange	2	50	104466	Gerotor (Class II)	1
17	104386	Filter Base "L"	1	49 and 50	104701	Plate, Pump and Gerotor (High Pressure)	1
17a	104382	Filter Base "U"	1	51	104421	Spring	1
	104384	Filter Base "U" w/Ports (2)	1	52	95881-038	Ball	1
17b	104531	Plate, Port	1	53	***	Piston, Dampening	
18	103144	Filter	1		104962	Piston (S/A)	2
19	104392	Gasket	1		105814*	Piston (S/A)	2
20	106008	Plug/Seal (S/A) No Dump V	1	54		Brake Lever Parts	
	8785-010	Seal, O-ring	1	A	106450	Quad Seal	2
20a		Dump Valve Parts	1	B	106079	Rod, Push	2
21	104664	Nut, Dump Valve Fitting	1	C	106437-000	E-Ring	4
22	8785-010	Seal, O-ring	1	D	106784	Spring Base (S/A)	2
23	104684	Spring, Dump Valve	1	E	106078	Spring, Conical	2
24	105660	Bracket, Dump Valve	1	F	106261	Shaft, Brake	1
25	8761-013	Seal, O-ring	1	G	16032-406P	Screw, Cap, Hex	1
26	103757-225	Screw 5/16 Hex Flange	16	H	106128-001	Lever, Brake RH	1
27	106129	Gasket, Axle Housing	2	I	106128-002	Lever, Brake LH	1
28	104551	15T Motor Rotor/Ball (S/A)	2	J	106144-XXX	Shim	A/R
29	110185	Pad, Friction	2	K	16188-4	Nut, Hex, Lock	1
29a	110186	Spacer	2	55	106285	.625 Str. Fitting/O-ring	1
30	106414	Plate, Reaction	2		8785-010	Seal, O-ring	1
31	106104	Plate, Backup	2	101	104167-000	Square Key (Straight Shaft)	2
32	104338	15T Sun Gear, First	2				
33	106027	Gear, Ring 57T	4				
34	106167	21T Planet Gear (S/A) First	6				
35	106174	15T Primary Carrier (S/A)	2				
36	104812	15T Sun Gear, Second	2				

*Piston, Dampening (S/A) - Wide Band Neutral — Not Shown (has orifice hole through center).
A/R - as Required (S/A) - Sub Assembly
**Magnet (S/A) - Not Shown (Removal Not Recommended)
*** See Chart on Page 6 — Housing (S/A)

Series 851

Reference Number 15 Housing (S/A)

		No Wide Band Neutral (53)			Wide Band Neutral (53)		
		No Charge Pump	Charge Pump* (47)	High Press. Charge Pump	No Charge Pump	Charge Pump* (47)	High Press. Charge Pump
CW	Standard	106138	106179	106209	106298	106304	106705
	Special	—	—	—	—	—	—
CCW	Standard	—	106208	106584	—	—	—
	Special	106226	—	—	—	—	—

* Class II

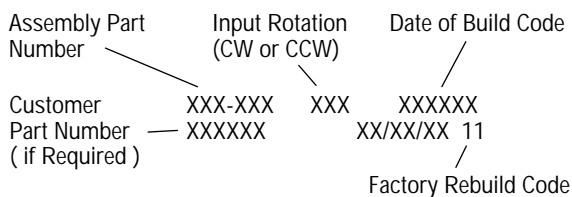
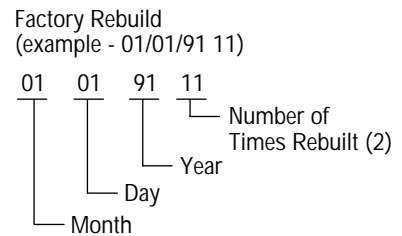
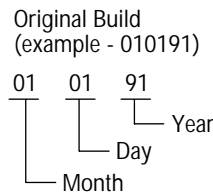
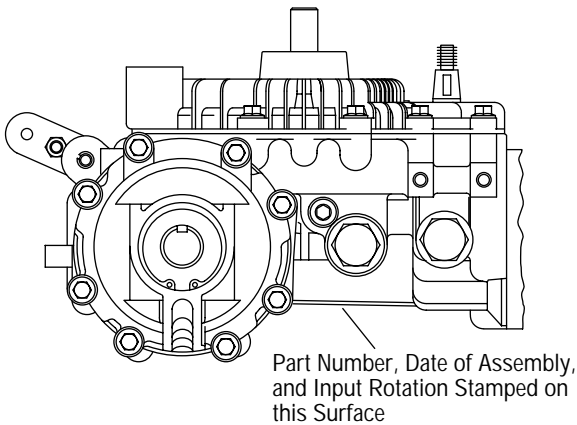
How to Order Replacement Parts

Each Order Must Include the Following:

1. Product Number
2. Date Code
3. Part Name
4. Part Number
5. Quantity of Parts

For More Detailed Information Contact Eaton Corp. Hydraulics Division 15151 Highway 5 Eden Prairie, MN 55344.

- Specifications and performance data, Catalog No. 11-888
- When servicing Series 851 Transaxle refer to Repair Information No. 7-416. This repair manual lists tools required, and step by step disassembly and reassembly procedures.



Series 851

Notes: _____

Series 851

Eaton Corporation
Hydraulics Division
15151 Hwy. 5
Eden Prairie, MN 55344
Telephone: 612/937-7254
Fax: 612/937-7130

Sumitomo Eaton
Hydraulic Company Ltd.
Ooi-Cho Kameoka-Shi
621-0017 Kyoto
Japan
Telephone: [+81] 771-22-9601
Fax: [+81] 771-29-2020

Eaton Ltd.
Hydraulics Division
Glenrothes, Fife
Scotland, KY7 4NW
Telephone: [+44] (0)1592-771-771
Fax: [+44] (0)1592-773-184

Eaton Ltd.
7th Floor, Woo Duk Building
832-2 Yeoksam-Dong, Kangnam-Ku
Soeul 135-750
Korea
Telephone: [+82] 2-557-0595
Fax: [+82] 2-557-1634

Eaton B.V.
Boeing Avenue 11
1119 PC Schiphol-Rijk
The Netherlands
Telephone: [+31] (0)20-655 6776
Fax: [+31] (0)20-655 6800

Eaton Hydraulics (Shanghai) Co. Ltd.
388 Aidu Road, Waigaogiao FTZ
Pudong New Area
Shanghai 200137
Peoples Republic of China
Telephone: [+86] 21-5046 0758
Fax: [+86] 21-5046 0767

Sumitomo Eaton Hydraulic Co.
8 Temasek Blvd.
42-01 Suntec Tower Three
Singapore 03988
Telephone: [+65] 832-7727
Fax: [+65] 832-7733

Jining Eaton Hydraulic Co. Ltd.
6 Ji Da Road
Jining City
Shandong Province 272131
Peoples Republic of China
Telephone: [+86] 537-2221288
Fax: [+86] 537-2221557



Quality System Certified
Products in this catalog are manufactured
in an ISO-9001-certified site.